

TRAVELSAFE
PARTNERSHIP



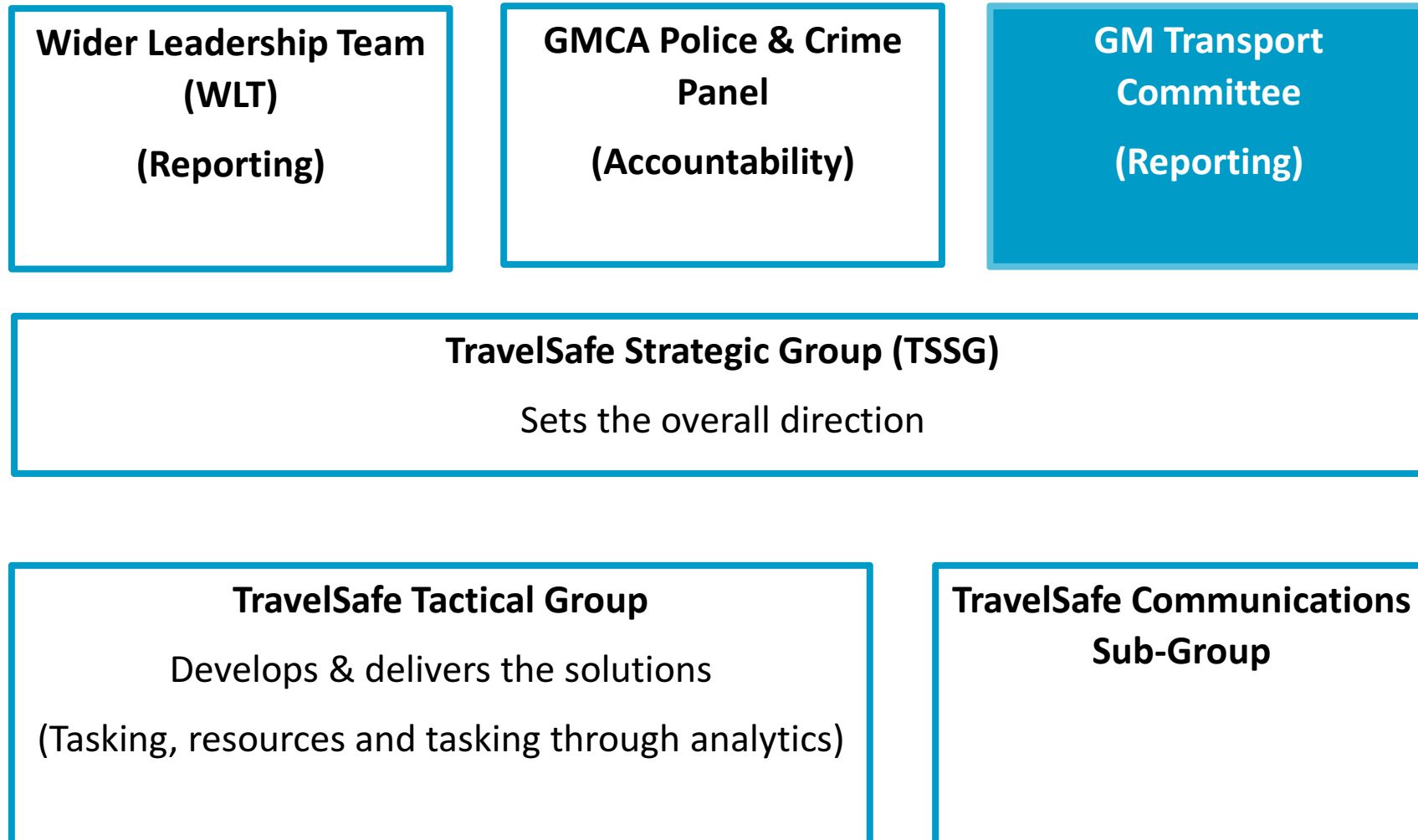
TravelSafe Partnership

Established 2015 as a 3 year pilot - reviewed and repositioned in 2018

Led jointly by TfGM and Greater Manchester Police (GMP) with support from:

- Metrolink Operator (KeolisAmey);
- Stagecoach;
- First Manchester;
- Go North West;
- GMCA and;
- British Transport Police (informal).

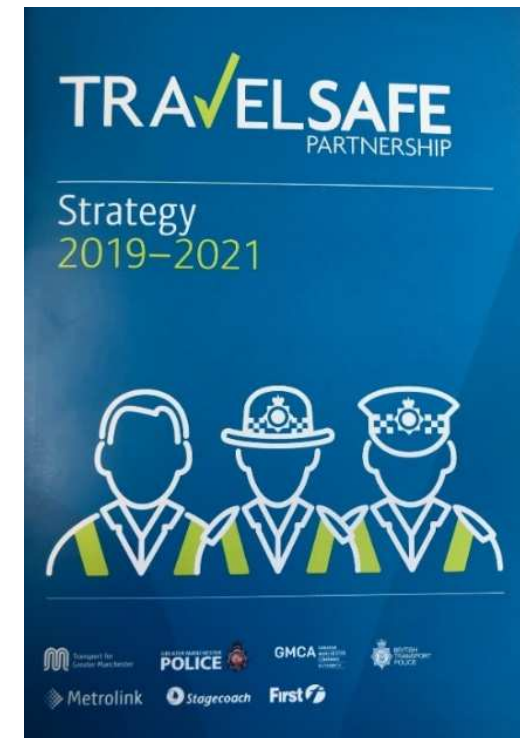
Governance (proposed)



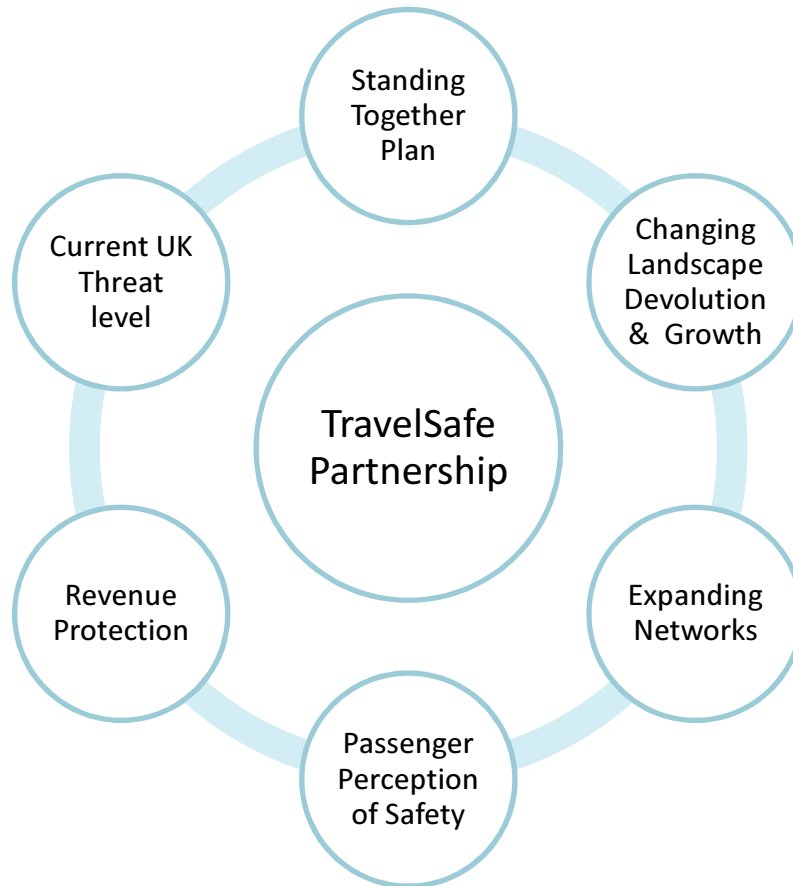
TravelSafe Strategic Aims

Partnership brought together to help support a safe and secure Transport Network:

1. Improve the perception of safety and security across public transport, offering reassurance to passengers;
2. Manage instances of Crime and Anti-Social Behaviour (ASB) occurring on the transport network; and
3. Discourage fare evasion.



Influences



The TravelSafe Partnership currently covers the bus and Metrolink network in Greater Manchester and is exploring an increasingly closer relationship with rail through BTP.

1. Priority One 'Keeping People Safe': protecting and caring for **people** who live, work, socialise and travel in Greater Manchester.
2. Priority Two 'Reducing Harm and Offending': **preventing** anti-social and criminal behaviour.
3. Priority Three 'Strengthening communities and places': helping to build resilient communities, and protecting the **places** where people live, work, socialise or travel.

Budget & Funding Model

- TravelSafe is a strategic partnership without independent financial standing.
- Mix of funding by partners of financial contributions and in-kind support with special constable roles through the national Employer Supported Policing Scheme.
- TravelSafe Partnership funding model is currently under review, current operator contributions are:
 - £250,000 – TfGM (Metrolink)
 - £60,000 – First
 - 6 members of staff on Employer Supported Policing Scheme providing 49% of their working time (4 Stagecoach, 1 KAM, 1 TfGM)

Annual Spend

Main spend for the TravelSafe Partnership is:

- Staffing (TravelSafe Partnership Manager/TravelSafe Partnership Officer)
- GMP Overtime (for events, special operations, protests etc.)
- Surveys/Data Analysis
- Engagement activity – communications and marketing materials
- Legal costs associated with pursuing civil injunctions
- Maintenance of the TSI website
- Funding for GMP Analyst

TravelSafe Partnership Approach

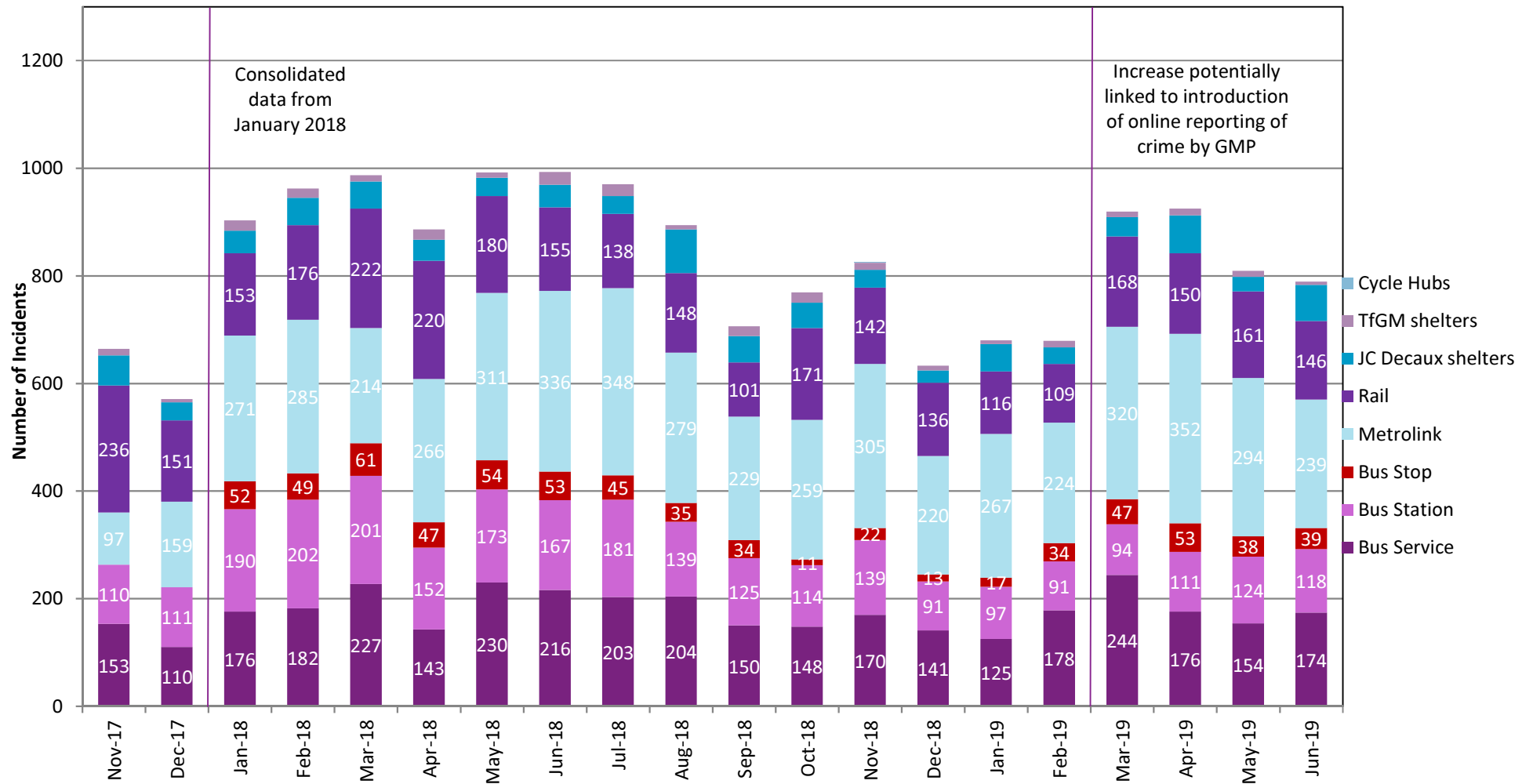
The Partnership takes a problem solving approach, using consolidated data to determine focus areas/themes based on information or intelligence.

Methods include:

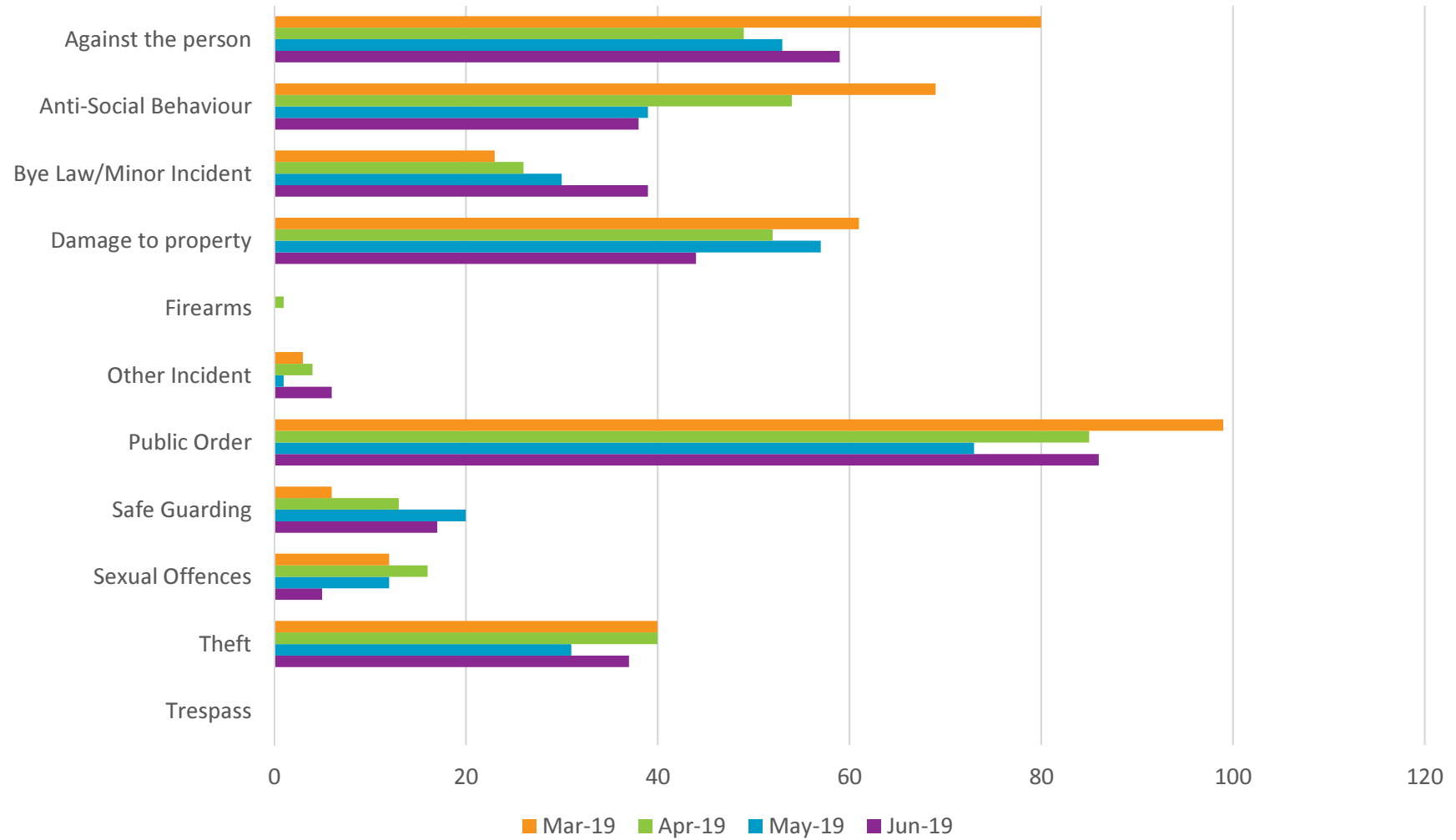
- **Preventative activities** – eg schools and community engagement, marketing campaigns
- **Target Hardening** – eg safety in design, Park Mark accreditation, safer trams stops
- **Partnership staff deployments** – eg days of action, enforcement operations

Modal Breakdown 2017 - present

Incidents of crime and antisocial behaviour by month 2017 - 2019



Bus Breakdown

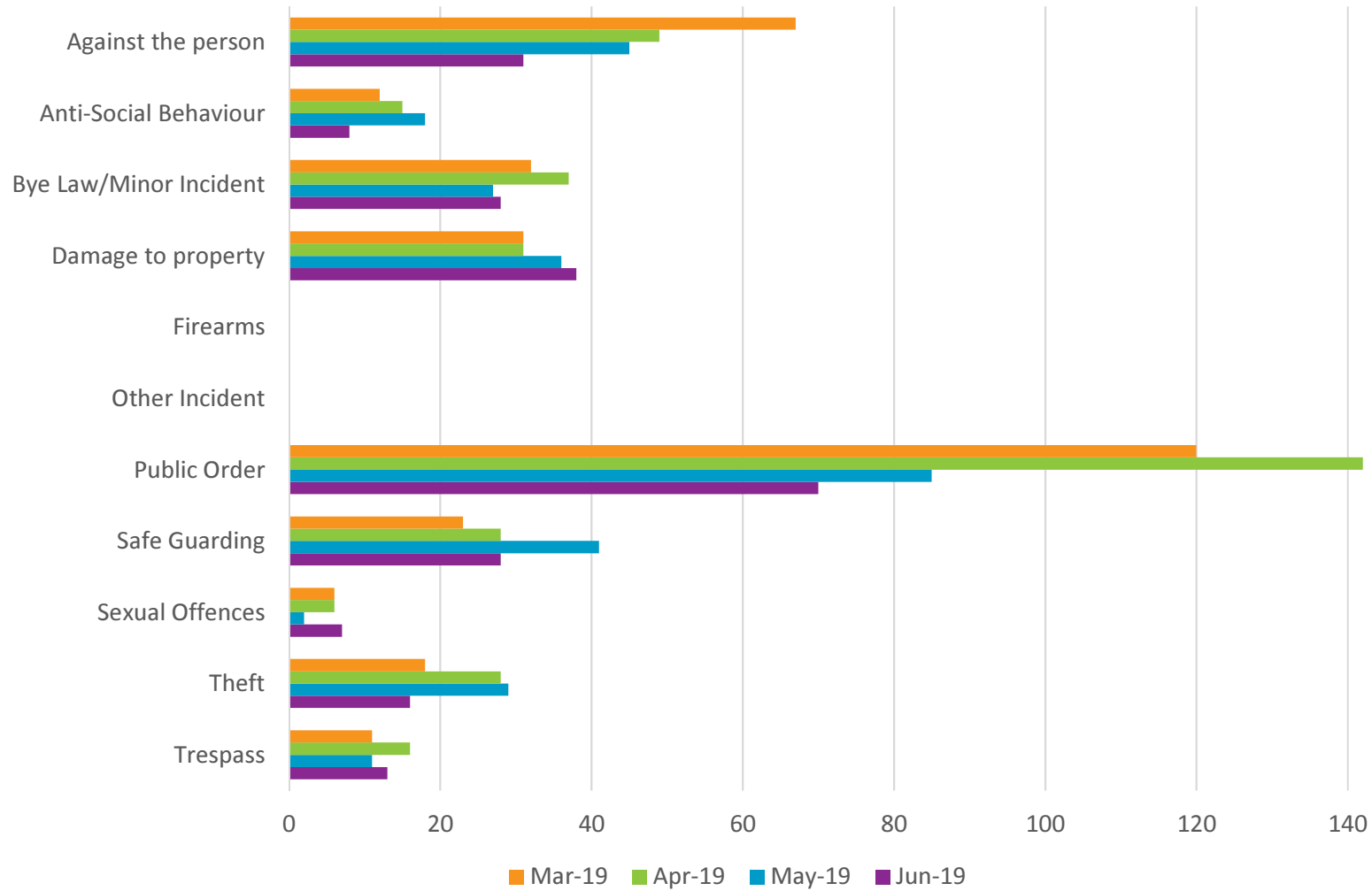


Data includes bus stops, bus stations and bus services

Key points from the bus summary for June shows:

- A rise in the number of incidents categorised as 'against the person' - assaults increasing from 35 in April to 50 in June.
- Almost half the recorded incidents (24 of 50) were within the Manchester local authority area.
- The increase in the number of Bye Law/Minor Incidents largely attributable to incidents at Middleton Interchange in June involving 3 people with active Exclusion Notices.

Metrolink Breakdown



Key points from the Metrolink summary for June shows:

- A reduction in Public Order incidents from 85 in May to 70 in June – mainly for drunk and disorderly and threatening behaviour and verbal abuse.
- Lower totals than the same period in 2018.
- Reduction in incidents ‘against the person’ from 39 in May to 23 in June.
- This reflects the 2018 trend.

Data

- Access to consolidated partnership data
- Analyst support to review and identify trends

Resourcing

- Recruitment and training of 50 PCSO's

New ways of working

- Increased partnership working using a 'problem-solving' approach
- Data/Intelligence driven rather than purely reactive

Powers

- Increased partnership working - using collective powers for greater effect
- TfGM Civil Injunction powers

TravelSafe Partnership Successes

Schools engagement:

- **2017-2018**
 - 123 sessions, 4,698 young people attended
- **2018-2019**
 - 410 sessions, 29,369 young people attended

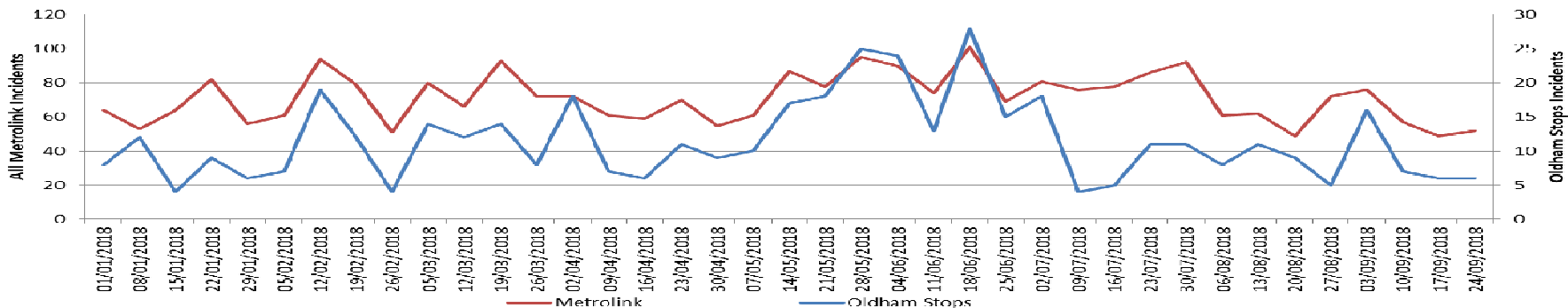
525% increase in engagement on last year



TravelSafe Partnership Successes

Operation Infinity –Oldham –Rochdale Line - July 2018

- **13 arrests** during the 2 week period: Fraud, Assault, Public Order, Wanted on Warrant and Aggravated Burglary
- **15 crimes recorded** for incidents on the network: Assault, Public order, Drugs offences and Theft/Fraud
- **2,603 revenue enforcement tickets issued** by Metrolink
- **105 pieces of intelligence** submitted
- **153 young persons engaged** with some requiring safeguarding interventions



TravelSafe Partnership Successes

Partnership Days of Action

- Minimum one per month for Manchester City Centre
- Additional based on intelligence
- Linked into wider national/GM initiatives (e.g. Rail Safety Week/ Challenger)



Community Engagement

- Partnership organised Oldham/Rochdale football tournament
- StudentSafe – University Freshers Fairs

Ongoing Partnership developments include:

- Increasing the Partnership reach
- Improving joint data collection systems
- Providing clarity on unacceptable behaviours
- Increased GMP presence within TfGM Control Centre
- Roll-out of a single GM Transport public reporting system
- Development of an Anti-Social Behaviour policy and procedures



**GREATER MANCHESTER
POLICE**

**Safer Transport Team
Specialist Operations Branch
*Proposed launch October 2019***

Vision & Direction

Transport Unit,

“To provide a pro-active policing presence across the Greater Manchester Transport Systems to reduce criminality and anti-social behaviour, improve public confidence and deliver on road safety across the entire Greater Manchester area.”

Establishment of

- 1 Inspector
- 5 Sergeants
- 57 Police Constables

Shift Pattern providing cover for:

Deployment Monday to Sunday

Core Hours from 0700 – 0200hrs

Additional Coverage Fri – Sat until 0500hrs

Monday – Friday resilience to provide action/demand week in response to tasking / events



Proposed to be based from the
Safer Transport Team HQ
Eccles Police Station

Proposed Duties

- **Foot/Cycle Deployment** across the GM Transport System / Hubs on **intelligence-led patrol**
- **Mobile Response** to Crime-in-Action occurring on the GM Transport System / Hubs
- Supporting the **restoration of the Metrolink System** following collision / significant disruption
- Engagement on **Road Safety Operations**, throughout the GM area, supporting the wider work for **Safer Roads GM / Cycling – Walking**
- Supporting the City Centre Night Time Operation to **reduce crime and ASB** at Transport Hubs and improving **public safety**

